



RAPID TEST

FLU A_B

V1701/V1705/V1720

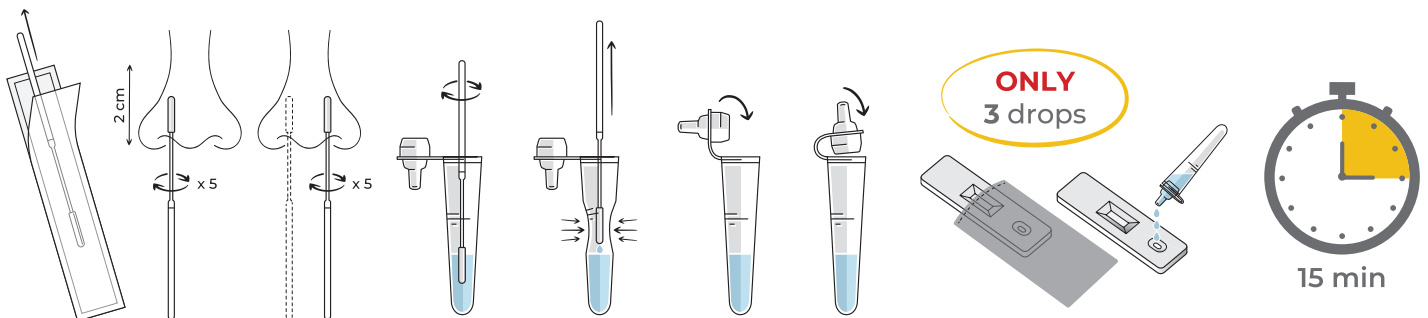
BE SURE BE SPECIFIC

ONE NASAL SWAB
FOR 2 DIAGNOSES
(FLU A | FLU B)

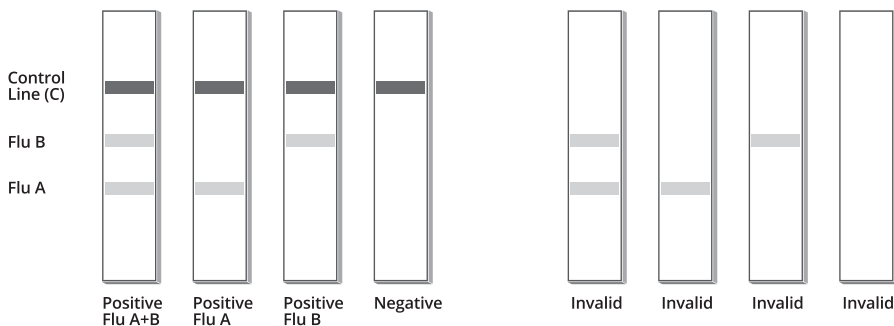
Rapid Test FLU A_B is a qualitative, lateral flow test designed to detect the presence or absence of INFLUENZA (A or B) virus antigens in nasal or nasopharyngeal swab specimens.

- Same protocol of use with the classic rapid test for COVID-19
- Chemical-free sterilised swab
- 3 lines cassette

TEST PROCEDURE



RESULT INTERPRETATION



**RAPID TEST
FLU A_B**