



# **RAPID TEST FLU\_COVID**

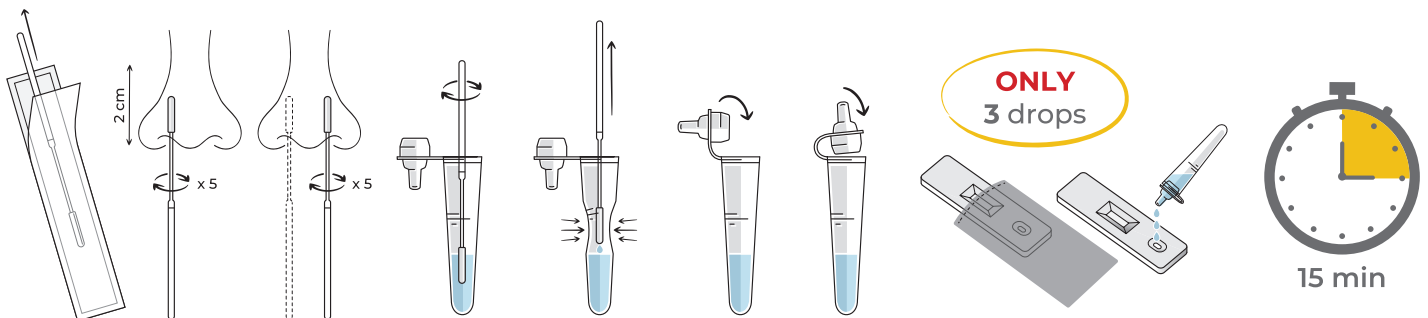
V1601/V1605/V1620

# BE SURE BE SAFE

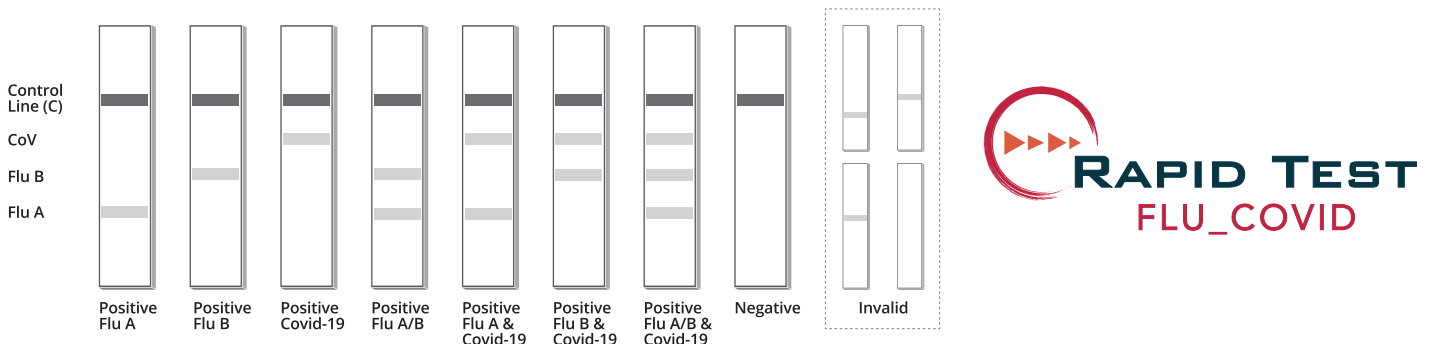
**Rapid Test FLU\_COVID** is a qualitative, lateral flow test designed to detect the presence or absence SARS-CoV-2 and Influenza virus antigens in nasal or nasopharyngeal swab specimens. It differentiates between Covid-19 (SARS-CoV-2) and the Flu (Influenza, Types A & B).

- One nasal swab for 2 diagnoses (FLU A/FLU B/COVID-19)
- Same protocol of use with the classic rapid test for COVID-19
- Chemical-free sterilised swab
- 4 lines cassette

## TEST PROCEDURE



## RESULT INTERPRETATION



[www.prognosis-biotech.com](http://www.prognosis-biotech.com)

✉ [info@prognosis-biotech.com](mailto:info@prognosis-biotech.com) ☎ +30 2410 623922

📍 Farsalon 153 | 41335 Larissa, Greece

 **PROGNOSIS  
BIOTECH**

